

Scottish Country Dancers of Colorado

October Regional Dance

Sundance Studio at 1450 Cipriani Loop in Monument

Saturday afternoon, October 10, 2009

Dance begins at 1:00 pm

With some dances walked through at 12:30

\$5.00 SCD members \$6.00 for non-members

Students through high school half price

Program

| | | | |
|---------------------------|--------|-----|-------------------------------|
| Round About the Place | 4x32J4 | (2) | Reynolds |
| Lads of Saltcoats | 8x32R2 | (3) | MMM 2-16 |
| In the Company of Friends | 3x32S3 | (3) | Reynolds |
| Dancing Girls | 8x32J3 | (3) | Brenchley, Kangaroo Paw |
| Edzell Arch | 6x32R2 | (3) | Drewry, Stoneywood |
| Dunvegan Castle | 4x64M4 | (4) | Ways, Island Clan |
| EH3 7AF | 8x32J3 | (2) | 40-6 |
| | | | |
| Abernethy Lassies | 8x32R2 | (2) | MMM 1-1 |
| The Enchanted Garden | 8x32S3 | (3) | Boyd, World Around the Corner |
| Capital Jig | 8x32J3 | (3) | 5 for 2009 |
| Starlight | 8x32R3 | (3) | 44-1 |
| Flowers of the West | 4x40S4 | (3) | Brenchley, Kangaroo Paw |
| Berwick Johnnie | 8x32J3 | (3) | Gr-14 |
| Trip to Bavaria | 4x32R4 | (3) | MacGregor-Brown |

As usual, bring snacks or beverages to share with your fellow dancers.

October Regional

| | |
|---------------------------|----------------------|
| Round About the Place | Abernethy Lassies |
| Lads of Saltcoats | The Enchanted Garden |
| In the Company of Friends | Capital Jig |
| Dancing Girls | Starlight |
| Edzell Arch | Flowers of the West |
| Dunvegan Castle | Berwick Johnnie |
| EH3 7AF | Trip to Bavaria |

Round About the Place

| | | |
|-------|---|------|
| (2) | | 32J4 |
| 1-8 | 1s cast behind their lines and cast up to place. | |
| 9-16 | 1s and 2s dance rt hands across and back by the lft. | |
| 17-24 | 1s cast to the bottom and turn by the rt. 2s, 3s, 4s step up on bars 19-20. | |
| 25-32 | Circle 8 hands round and back. | |

Lads of Saltcoats

| | | |
|-------|---|------|
| (3) | | 32R2 |
| 1-8 | W1 give rt shldr to M1 to dance reel of 3 across the dance w/ W2. | |
| 9-16 | M1 give lft shldr to W1 to dance reel of 3 across the dance w/ M2. | |
| 17-24 | Cpl 1 lead down the middle, lead back up, and cast to 2 nd . | |
| 25-32 | Cpls 2 and 1 dance rts and lfts. | |

In the Company of Friends

| | | |
|-------|--|------|
| (3) | | 32S3 |
| 1-8 | All set, advance for one and retire for one, turn prtnrs with both hands. 2s finish facing out. | |
| 9-16 | Reels of 3 on the sides. 1s cross down to start and cross up on bars 13-14. 2s dance out and up to begin. | |
| 17-24 | Circle 6 hands round to the lft halfway, set, 3s cross by rt while 1s and 2s turn ½ by rt to promenade hold. | |
| 25-32 | 1s and 2s dance an allemande. | |

Dancing Girls

| | | |
|-------|---|------|
| (3) | | 32J3 |
| 1-8 | 1s set, cast as the 2s step up, and W1 with 2s and M1 with 3s dance rt hands across. | |
| 9-16 | 1s turn prtnr by lft, 1 st cnr by rt, prtnr by lft, and 2 nd cnr by rt to end in 2 nd on opp sides facing 1 st cnr. | |
| 17-24 | 2s, 1s, 3s dance half lft shldr reel of 3 on sides and half rt shldr reel of 3 across. 1s end in 2 nd on own sides. | |
| 25-28 | 1s turn by rt 1¼, while cnrs dance ½ rts and lfts, changing on the sides to begin. | |
| 29-32 | W1 dance up between 2s and M1 dance down between 3s and cast rt to own sides. | |

Edzell Arch

| | | |
|-------|--|------|
| (3) | | 32R2 |
| 1-8 | Cpl 1 set, cross, cast to 2 nd while the 2s step up, M turn with both hands ¾ with skip change to end facing down with near hands joined to form an arch. | |
| 9-16 | W dance fig 8's through arch, W1 dance up through arch and W2 cast to begin. | |
| 17-24 | M turn with both hands ½ with skip change and cast to places, 1s dance ½ fig 8. | |
| 25-32 | Cpls 2 and 1 dance rts and lfts. | |

Dunvegan Castle

| | | |
|------------|--|-------------|
| (4) | | 64M4 square |
| Strathspey | | |
| 1-4 | M advance 1 step and set lft while W set rt and advance 1 step. Turn 2H 1 ½ to face in. | |
| 5-16 | Repeat bars 1-4 to original side turning prtnr only once to finish in prtnr's place. | |
| 17-24 | Interlocking reels of 4 (as in 1314). Finish where you start, M facing out. | |
| 25-32 | Double reels of 4 across the set. M finish back to back in center facing diagonally out between prtnr and lady originally on rt. | |
| Reel | | |
| 1-8 | With hands joined set; M move out and W move in with petronella turn. All set; M move in and W move out with petronella turn. | |
| 9-16 | All set and change by rt with prtnr while setting. All set and change by lft with person on lft while setting. | |
| 17-24 | All set and change by lft with person on lft while setting, all set and turn prtnr by rt to original places. (Variation: draw W out to place while setting.) | |
| 25-32 | Circle 8 hands round and back. | |

EH3 7AF

| | | |
|-------|---|------|
| (2) | | 32J3 |
| 1-8 | Cpl 1 lead down the middle and up, 2s and 3s step in on bar 8. | |
| 9-16 | Cpls 1, 2, 3 promenade; 1s cast to 2 nd and 2s dance to 1 st . | |
| 17-20 | Cpl 1 pass by rt and turn 1 st cnrs by rt to finish between 2s and 3s. | |
| 21-24 | Cpl 1 pass by rt and turn 2 nd cnrs by rt to finish in 2 nd on opp sides. | |
| 25-28 | M1 with 2s and W1 with 3s dance rt hands across once round. | |
| 29-32 | W1 cross up between 2s and cast down while M2 cross down between 3s and cast up to end in 2 nd . | |

Abernethy Lassies

| | | |
|-------|--|------|
| (2) | | 32R2 |
| 1-8 | Cpl 1 turn by rt. Cpl 1 turn by lft 1½ to end in 2 nd place on opp sides facing up. 2s step up on bars 7-8 and face down. | |
| 9-12 | Cpls 2 and 1 set and turn opp with both hands. | |
| 13-16 | W1 and W2 change by rt while M1 dances up and M2 dances down the sides. All turn by lft to original places. | |
| 17-24 | Cpl 1 lead down the middle and up. | |
| 25-32 | Cpls 1 and 2 dance poussette. | |

The Enchanted Garden

| | | |
|-------|--|------|
| (3) | | 32S3 |
| 1-8 | Cpl 1 turn by rt, cast to 2 nd while the 2s step up, cross over the set passing lft shldrs, cast rt around 1 st cnrs to end back to back in the middle (lady facing up and man facing down). | |
| 9-16 | W1 with the 2s and M1 with the 3s dance rt hands across at the top and bottom, pass rt shldrs, and dance lft hands across at the opp end and finish in 2 nd place. | |
| 17-24 | Cpls 2, 1, 3 set in lines, turn prtnr ½ with both hands, cast away from prtnr to the sides, and cross by the rt. | |
| 25-32 | Circle 6 hands round and back. | |

Capital Jig

- (3) 32J3
1-8 Cpls 1 and 2 set and rotate.
9-16 Cpls 2, 1, 3 dance reels of 3 on the sides, 1s and 2s passing rt shldr to begin.
17-20 1s set and turn by rt ¼ to end shldr to shldr facing own sides.
21-24 W1 up and M1 down, dance lft hands across to finish in 2nd on opp sides.
25-28 1s set and turn by rt ¾ to end shldr to shldr facing opp sides.
29-32 M1 up and W1 down, dance lft hands across to finish in 2nd place on own sides.

Starlight

- (3) 32R3
1-8 Cpl 1 cross by rt, cast as the 2s step up, turn rt about with pas de basque to end back to back, set as in double triangles.
9-12 Cpl 1 dance out and cast rt to end W1 between 2s and M1 between 3s, while the crnrs advance and retire diagonally.
13-16 Cpl 1 turn rt about with pas de basque to end back to back facing the ends, set as in crown triangles.
17-20 Cpl 1 dance out the ends and cast rt to 2nd on own sides, while the crnrs advance and retire diagonally.
21-24 Rt hands across, W1 with 2s and M1 with 3s. Finish facing 1st crnrs.
25-32 Hello and goodbye setting.

Flowers of the West

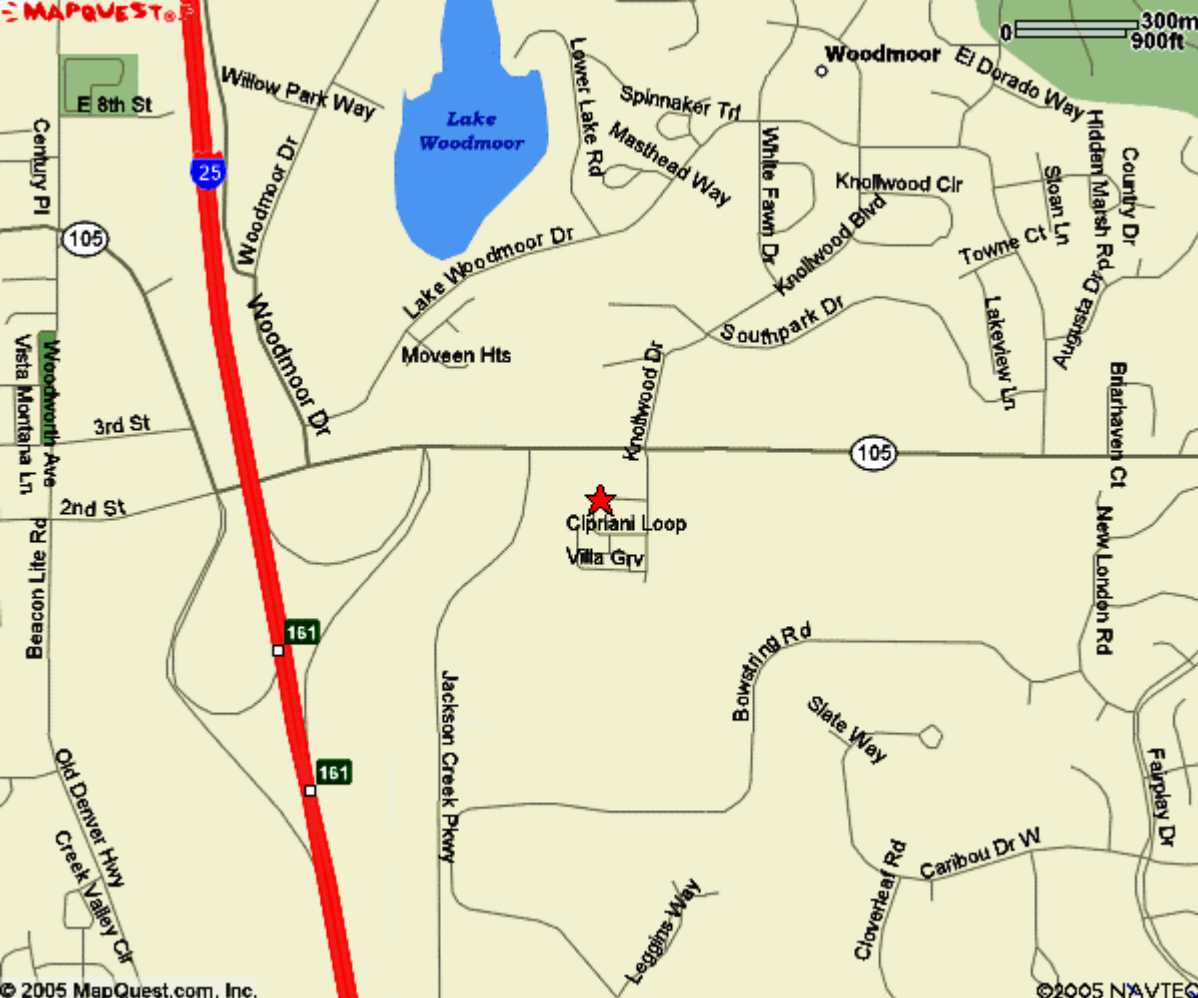
- (3) (3s and 4s begin on opposite sides) 40S4
1-4 1s and 4s turn by rt and cast toward center as the 2s and 3s step out to the crnrs.
5-8 1s and 4s dance ½ rts and lfts to finish ready for Targe. Finish 1s in 2nd facing up and 4s improper in 3rd facing down.
17-24 Reels of 4 on the sides.
25-32 All turn ½ by the rt on the sides. 2s and 3s dance lft hands across once round while 1s and 4s dance CW halfway round the set. All turn ½ by the rt on the sides.
33-40 All set on the sides, turn prtnr with both hands, and circle 4 hands round to the lft.

Berwick Johnnie

- (3) 32J3
1-8 Cpls 1 and 2 set, dance rt hands across halfway, set, and dance lft hands across halfway back to places.
9-16 Cpl 1 lead down the middle and up, 2s step in.
17-24 Cpls 1 and 2 dance allemande, cpl 1 finish facing 1st crnrs.
25-32 Cpl 1 dance crnr, prtnr, crnr, prtnr.

Trip to Bavaria

- (3) 32R4
1-2 Ends change by rt while middle cpls dance rt hands across halfway.
3-4 All change by the lft on the sides w the near person.
5-16 Repeat bars 1-4 three more times.
17-20 Cpl 1 set diagonally to cpl 2, then cross into 2nd while 2s dance up.
21-28 Repeat bars 17-20 with 3s and 4s.
29-32 Cpls 2, 3, and 4 advance together, while cpl 1 does two-handed quick turn, all cpls retire to own side.



Lake Woodmoor

Woodmoor

Cipriani Loop
Villa Grv

E 8th St
Century Pl
Woodmoor Ave
Vista Montana Ln
3rd St
2nd St
Beacon Life Rd
Old Denver Hwy
Creek Valley Ctr

Willow Park Way
Woodmoor Dr
Woodmoor Dr

Lower Lake Rd
Spinnaker Trl
Masthead Way
White Fawn Dr
Knollwood Blvd
Southpark Dr

El Dorado Way
Hidden Marsh Rd
County Dr
Sloan Ln
Towne Ct
Lakewood Ln
Augusta Dr

Moveen Hts

105

161

161

Jackson Creek Pkwy

Bowstring Rd

Slate Way

Leggins Way

Cloverleaf Rd

Caribou Dr W

Earlhaven Ct
New London Rd

Fairplay Dr