

December Program

H	On the Quarter Deck	8x32H2	(2)	3	Boyd, Harbour City
R	Lochalsh Reel	8x40R3	(3)	3	Burnett, Skye Coll
R	Tambourine Reel	8x32R3	(3)	2	Bowlin, East Ivanhoe
R	Rising Phoenix	8x32R3	(4)	1	The Devil's Quandary 2
R	The Cairdin' O' T	8x32R2	(3)	1	
J	Aird of Coigach	4x48J4	(4)	3	Bayly, Imperial 3
J	Links with St. Petersburg	8x32J3	(3)	3	46-5
J	Christine M Philips	8x32J3	(3)	2	46-3
J	Captain Jimmy's Jig	8x32J3	(3)	1	The Devil's Quandary 2
J	Glayva	8x32J2	(4)	1	
S	The Bonnie Tree	8x32S3	(3)	3	46-8
S	Gourdieburn	3x32S3	(3)	2	Cowie, Banffshire
S	Rannoch Moor	5x32S5	(3)	2	Goldring, Graded 3
S	Mist on the Heather	8x32S3	(2)	1	The Devil's Quandary 1

ON THE QUARTER DECK (R8x32) 2C (4C Set)**I Boyd Harbour City**

- 1- 8 1s set & cross over RH, set & ¾ turn RH
 9-16 1s dance RH across with 2M & LH across with 2L
 17-24 1L followed by 1M dance down for 2 & 1M followed by 1L dance up for 2, both cast on Ladies side & 1M crosses to 2nd place own side
 25-32 2s+1s R&L

THE LOCHALSH REEL (R8x40) 3C (4C set)**P Burnett Skye Coll 2**

- 1- 8 1s turn RH, cast 1 place, cross LH, cast 1 place to meet partner in prom hold facing 3M (Lady on Mans left)
 9-16 1s dance LSh reel of 3 across with 3s
 17-24 1s split to dance reels of 3 on opposite sides
 25-32 1s dance (nearer hands joined) to top, turn 2s with other hand, cross down between 3s & cast up to 2nd place own sides
 33-40 1s dance RH across (Lady with 2s & Man with 3s), pass RSh to dance LH across with other couple

TAMBOURINE (R8x32) 3C (4C set)**L Bowlen East Ivanhoe Bk**

- 1- 8 1s lead down the middle & back to 2nd place own side
 9-16 1s dance ½ reels of 3 across (Lady with 2s & Man with 3s) & ½ reels of 3 on opposite sides
 17-24 1s dance ½ reels of 3 across (Man up Lady down) & ½ reels on own sides
 25-32 2s+1s+3s circle 6H round & back

Rising Phoenix NOT FOUND

THE CAIRDIN' O'T (R8x32) 2C (4C set)**I Boyd Cairdin O't**

- 1- 8 1s+2s Adv+Ret & dance RH across ending 1s facing 2s
 9-16 Repeat & end in original places
 17-24 1s+2s set, petronella turn into centre, set & change places RH with partner
 25-32 1s+2s dance ½ RSh reel of 4 & turn partners RH ¼ times

AIRD OF COIGACH (J4x48) 4C set**J Bayly Imperial 3**

- 1- 8 All Men dance across passing partner RSh & cast down to the bottom of set (4th Man leading), cross the bottom of the set & up Men's side
 9-16 All circle 8H round & back (retaining the circle formation to bar 40)
 17-20 1L & 1M with dancer on their left (nearer hands joined) cross diagonally (Mens arch) & both pairs turn away from each other to face in
 21-24 1L & 1M take dancer on left (NHJ) & cross over (dancing Man couple make arch) both pairs turning away from each other to face in
 25-32 1s continue this Fig 2 more times to end with top 2 dancers facing each other **also** bottom dancers facing each other for a Snowball chain
 33-40 All dance Snowball Chain for 4 cpls: -
 `End couples cross RH & change places LH on side with side persons
 `Original side persons cross RH **while** original end couples change places RH on sides & all change places LH on sides
 41-48 All Ladies dance across passing opposite Man RSh & cast up to top, cross & down on the Ladies side to end opposite partner. 2 3 4 1

LINKS WITH ST PETERSBURG (J8x32) 3C (4C set)**M Brown RSCDS Bk 46**

- 1- 8 1s & 2s Set+Link ending 2s facing 1s NHJ, 2s & 1s Set+Link with partners to opposite sides. (2)(1)3
 9-16 1s followed by 2s dance down for 3 bars & change places with Lady dancing under Mans arm, 2s+1s dance up to 1st & 2nd places
 17-24 2M+1M turn LH **as** 2L+1L turn RH, 1M+3M turn RH **as** 1L+3L turn LH & 1s end facing 1st corners
 25-32 1s dance 'Hello-Goodbye' setting & petronella turn to 2nd place own sides

CHRISTINE M PHILLIPS (J8x32) 3C (4C set)**J Brenchley RSCDS Bk 46**

- 1- 8 1s set advancing & lead down below 3s crossing 1s cast to 2nd place opp sides & turn LH to face 1st corners
 9-16 1s dance ½ reel of 4 with 1st corners, 1s turn 3rd corners (pstn) RH & turn LH to face 2nd corners
 17-24 1s dance ½ reel of 4 with 2nd corners, 1s turn 4th corners (pstn) RH & turn LH to Man facing up Lady down
 25-32 1M+3s (at top) **also** 1L+2s dance RH across, 1s turn LH to 2nd place own sides **while** 2s+3s chase ½ way clockwise

Captain Jimmy's Jig NOT FOUND

GLAYVA (J8x32) 2C (4C set)**J Drewry Canadian Bk**

- 1- 8 1s+2s dance ½ double Fig of 8, 1L+2L & 1M+2M turn on sides (Men LH Ladies RH)
 9-16 1s+2s dance ½ double Fig of 8, 1L+2L & 1M+2M turn on sides (Men RH Ladies LH)
 17-24 1s+2s dance RH across ending with dancers turning (individually) by the right to places & setting
 25-32 1s+2s cross (Ladies dancing between Men) Ladies change places RH, 1s+2s cross back (Men dancing between Ladies) Men change places RH (1s+2s have now changed pstns), 2s turn RH & 1s turn LH

THE BONNIE TREE (S8x32) 3C (4C set)**R Butterfield RSCDS Bk 46**

- 1- 8 1s dance down below 3s & cast up behind 3s, dance up between 2s & cast to 2nd place
 9-16 2s+1s+3s ½ turn partner 2H & twirl to cast into partner's place, all circle 6H round to left ¼ way into lines across (Men facing down at top)
 17-20 1s change places RH & cast right to 2nd place own side **while** (bar 19) 3M+2L change places diagonally RH
 21-24 1s cross RH & cast right into middle **while** (bar 23) 2M+3L change places RH all end in lines across (Ladies facing down, Men up)
 25-32 All ½ turn partner 2H & cast right to opposite place, all circle 6H round to left to own sides. 2 1 3

GOURDIEBURN (S3x32) 3C set**M Cowie Banffshire Bk**

- 1- 8 1s turn RH & cast 1 place, dance down between 3s & cast back to 2nd places
 9-16 1s pass LSh & dance ½ reel of 4 with 1st corners, pass RSh & dance ½ reel of with 2nd corners ending in 2nd place opposite sides
 17-20 1s petronella turn **as** 3s+2s change places RH on sides into lines across & all set down/up
 21-24 1s petronella turn **as** 2s+3s cross RH to own sides & all set
 25-32 1s dance up between 2s & cast to 2nd place, 1s+3s dance ½ Diamond Poussette. 2 3 1

RANNOCH MOOR (S5x32) 5C set

R Goldring Graded Bk 3

- 1- 8 1s dance ¼ Fig of 8 round 2s into middle (2s step up), 1L+2M+3M dance RH across as 1M+2L+3L dance RH across & end in Prom hold facing 3M
- 9-16 1s dance RSh reel of 3 across with 3s ending in 2nd pl & 1s facing 4M:
- 17-24 1s dance reel of 3 with 4s into middle with 4s ending in 3rd place & 1s end in middle in 4th place
- 25-28 1L dances RH across with 4M+5M as 1M dances LH across with 4L+5L;
- 29-32 1s cast up round 5s & cross down to 5th place own sides (5s step Up)

Mist on the Heather NOT FOUND



CAPTAIN JIMMY'S JIG

32 bar Jig for 3 couples - 1998

- 1-6 1st couple cast off one place, dance down between the 3rd couple and cast up one place.
2nd couple step-up on bars 1 & 2.
- 7-8 1st couple set advancing, pulling back right shoulder to end, back to back with partner in the middle, facing own side.
- 9-16 1st couple dance double triangles. End back to back in the middle, facing own side.
- 17-24 1st couple dance a figure of eight on their own side, begin by passing right shoulders with the person to their right, 1st woman with 3rd woman, 1st man with 2nd man.
- 25-32 1st couple dance a right shoulder reels of three on own side. Pass right shoulders with same person as in the figure of eight to begin and end in second place. Repeat, having passed a place.

Recommended Recording: *Fair Jenny's Jig*, Fiddlesticks and Ivory, *Ghillies on the Golden Gate* (CD).

Note: Written for my friend Jim Randall.

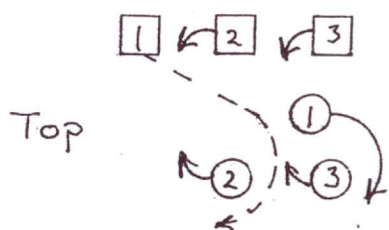
THE CROWN AND THISTLE

32 bar Reel for 3 couples - 1998

- 1-4 1st couple set and cast off one place. 2nd couple step up on bars 3 & 4.
- 5-8 1st couple dance right hands across (teapots), 1st man with 3rd couple, 1st woman with 2nd couple (Do not rush the right hands across). 1st couple face first corners.
- 9-16 1st couple turn first corner with right hand, partner left, second corner right hands and turn partner with left hands 3/4, to end with man facing down and woman facing up.
- 17-24 1st couple dance a left shoulder reel of three across the dance, 1st man giving left shoulder to 3rd woman and 1st woman giving left shoulder to 2nd man.
- 25-32 1st couple then dance a left shoulder reel of three on their own side, 1st man giving left shoulder to 2nd man and 1st woman giving left shoulder to 3rd woman. End in second place. Repeat, having passed a couple.

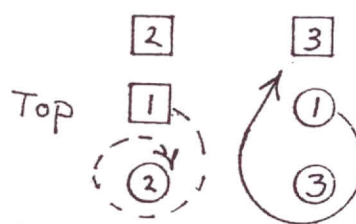
Music: *Farewell to Whiskey*, Niel Gow.

Golden Gateway Reel (Fig. 1)

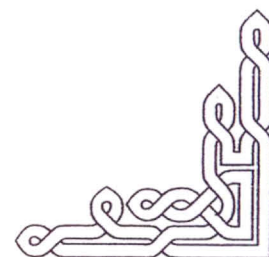


Begin Bar 9

(Fig. 2)



Bars 17-20



MIST ON THE HEATHER

32 bar Strathspey for 3 couples

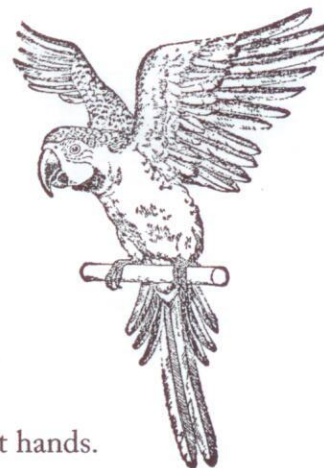


- 1-4 1st and 2nd couples set at the sides and turn partner once round with both hands. Both couples end in the middle of the dance, 1st couple facing down and 2nd couple facing up, with nearer hands joined with partner.
- 5-6 1st couple dance down the middle and out to second place and face out, while 2nd couple separate and dance to the top place and face in.
- 7-8 1st couple cast up to first position on their own sides, while 2nd couple, nearer hands, dance down the middle to second place and remain facing down.
- 9-16 All three couples dance a grand chain.
- 17-20 1st couple dance in toward each other and cast off one place, 2nd couple step-up on bars 19 & 20.
- 21-24 1st couple dance between 3rd couple and cast up one place, ending in the middle, back to back facing own sides.
- 25-28 Circle three hands round to the left, 1st man with 2nd and 3rd men, and 1st woman with 2nd and 3rd women. 1st couple pull back right shoulders to face partner in the middle.
- 29-32 1st couple set to each other and cast, pulling back right shoulders, to own sides. Repeat, having passed a couple.



OOT WI' THE AULD

40 bar Jig for 4 couples



- 1-4 All turn by the right hand and clap at the end of bar 4.
- 5-8 All turn by the left hand and clap at the end of bar 8.
- 9-16 1st couple with 2nd couple, 3rd couple with 4th couple, dance right hands across, then left hands across.
- 17-24 All dance back to back and turn once round, giving right hands.
- 25-32 1st couple cast off one place, dance between 2nd and 3rd couples, dance out between 3rd and 4th couples, and cast to the bottom. All others step up on bars 31-32.
- 33-40 All circle 8 hands round and back (*optionally, dance four hands round and back, top couples and bottom couples, circling separately*). Repeat from new positions.

Dance Notes: The option in the last 8 bars will add some interest to the dance if there are more advanced dancers in the set; the big circle tends to get sloppy at times. This is a good audience participation dance, and is also good for beginners because of the several figures introduced. Do not rush when phrasing bars 25-32.

RISING PHOENIX

32 bar Reel for 3 couples - September 2001

- 1-2 1st couple, no hands given, cross down one place while 2nd couple cast up on bars 1 & 2. 1st couple end on opposite sides facing down and out, between 2nd and 3rd couples.
- 3-4 1st couple turn 3/4 way round with 3rd couple, 1st man with right hand and 1st woman with left hand and end between the 3rd couple facing up.
- 5-8 1st couple dance between 2nd couple and cast off one place. 1st couple end in the middle of the set, woman facing down between 3rd couple, 1st man directly behind his partner.
- 9-16 Guillaume Reel: 1st couple dances a left shoulder reel of three across the dance with the 3rd couple. 1st woman passes left shoulder with 3rd woman, while 1st man passes right shoulders with 3rd man to begin. 1st man follows his partner through the middle of the reel, but dances to opposite side of his partner. 1st couple ends in the middle facing up the set, 1st man in front of his partner between the 2nd couple (Fig. 1).
- 17-24 Guillaume Reel: 1st couple dances a right shoulder reel of three across the dance with the 2nd couple. 1st man starts by passing right shoulder with 2nd woman while 1st woman dances to the left after passing the middle of reel. Continue as in first reel. 1st couple slow down slightly, end in second place on own sides (Fig 2).
- 25-28 1st couple cross down between the 3rd couple and cast up one place.
- 29-32 1st couple cross up between the 2nd couple and cast off to second place on own sides. Repeat, having passed a couple.

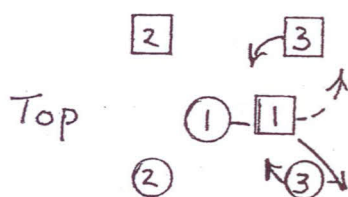
Dance Notes: *Guillaume reels*: 1st couple dances a figure of eight between the side couples while side couples dance a full reel of three. 1st woman always starts to her left, following or leading her partner through the middle of the reel as 1st man dances likewise to his right. Reels and figures eight must be exactly phrased in order to work properly. Side couples and 1st couple must be half way at the end of bar 4. 1st couple should be close together on bar 4. Reels may be done with either gender, starting reel or to either side to begin. They can also be done on the diagonal.

Music: *Rising Phoenix* by Bob Mc Murtry, page 20.

Recording CD: *The Devil's Quandary*.

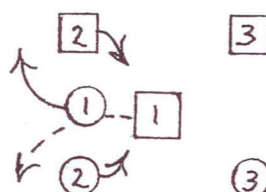
Note: This dance is dedicated to the brave firefighters who gave their lives to help others during the September 11th tragedy in New York City. I was a firefighter for 28 years.

Fig. 1



Begin Bar 9

Fig. 2



Begin Bar 17

